

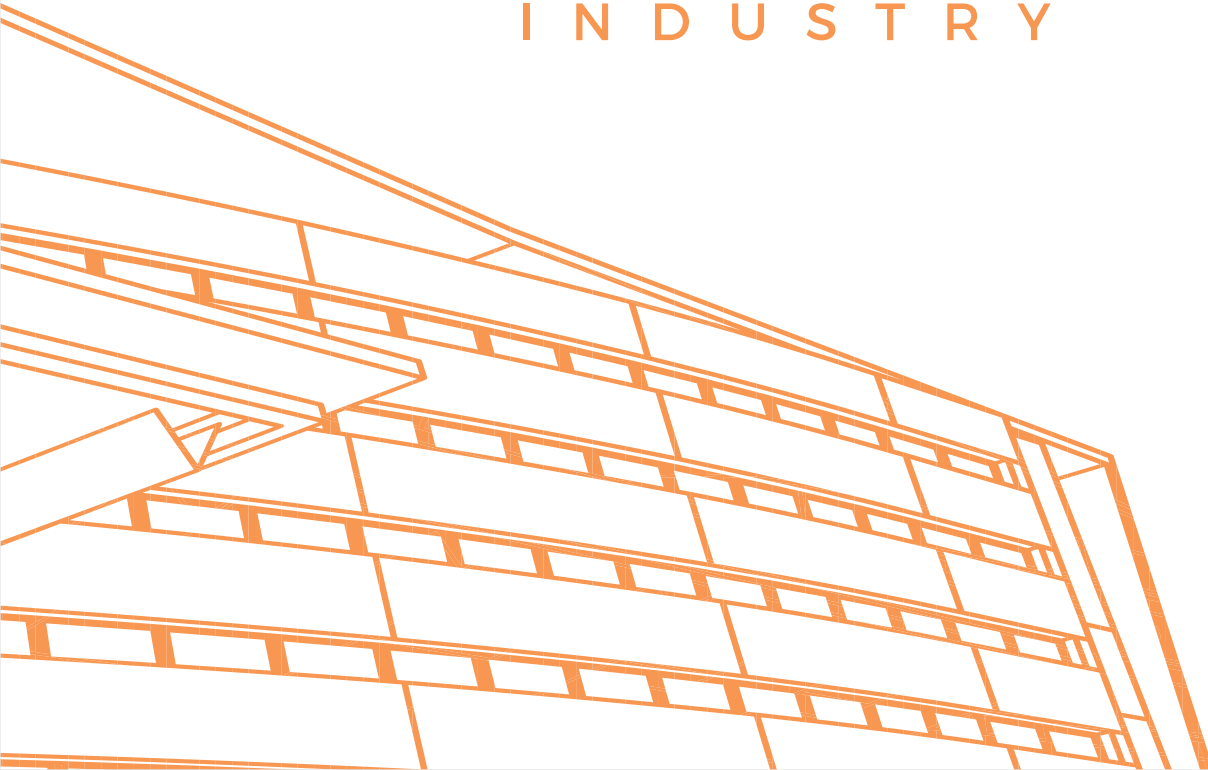
॥ श्री वल्लभ कृपा ॥

॥ गुरुकृपा केवलम् ॥

TRANSFORMING
INDUSTRIES WITH
BLESSINGS &
WISDOM
O F A G E S



sahkar
I N D U S T R Y



WHY US ?

35k+

Metric Ton/month
Plant Capacity

1200+

Completed
Projects

1Lakh +

Square Meter
Plant Size

550+

Happy Client



We plant 1 tree
for every 100 Bags Sold

ABOUT OUR COMPANY

“Sahkar is the leading manufacturer, exporter and supplier of high-quality construction chemicals and building finishing products to the Indian industry and overseas markets. Sahkar has maintained the highest level of quality and consistency.

The Basic Vision & Motive of the Sahakar to help people build their homes durable, heat & water resistive and UV protective at Economic Price by using innovative Ecofriendly construction technologies.

The unique concept & researched of Silica soil to different utilization founded by our Visionary Team Leader.

ISO 9001:2015 CERTIFIED

Emphasizing on the quality of offered silica sand and bed material, we believe in making long term relationship with our customers.

WHAT IS OUR INFRASTRUCTURE EXCELLENCE :

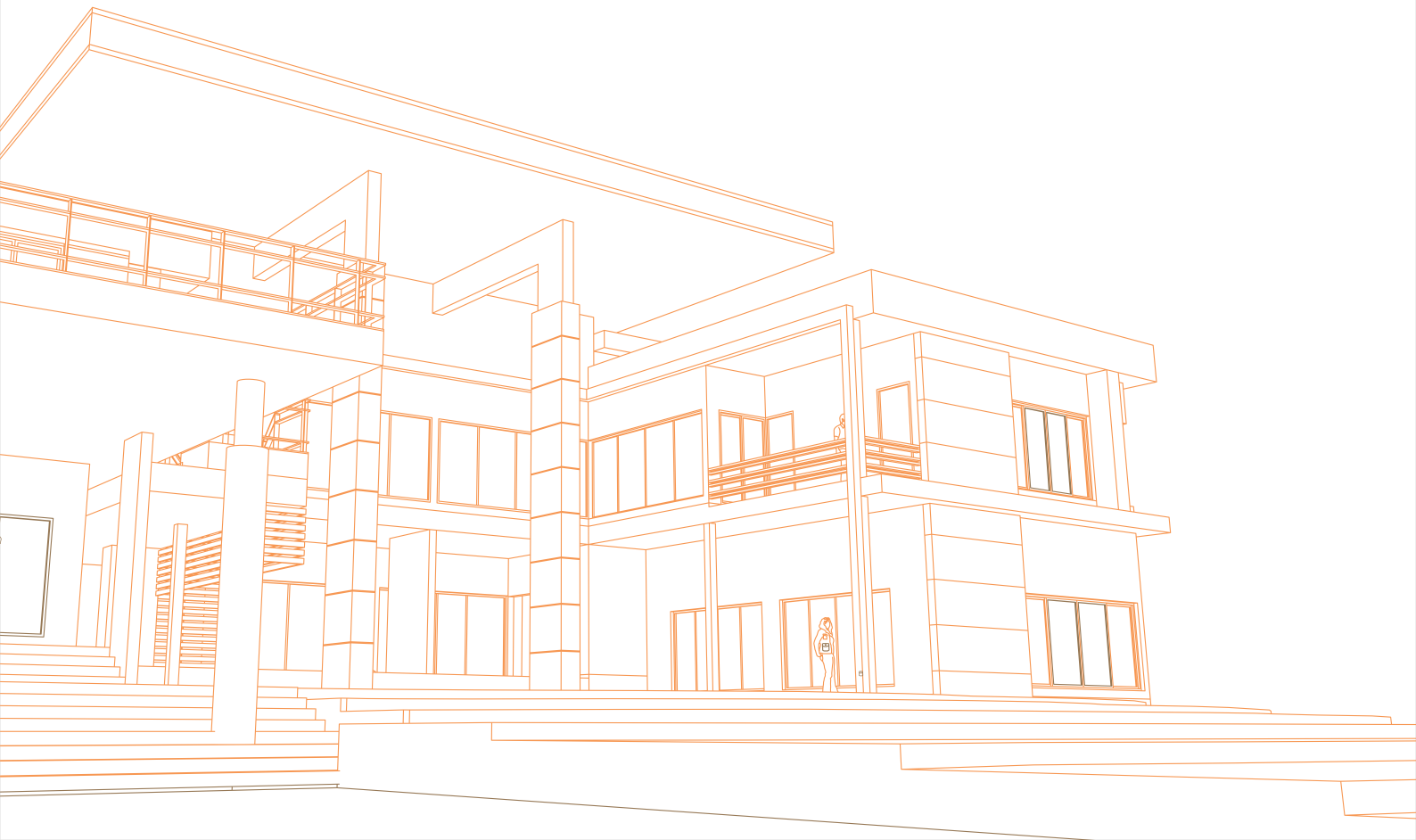
Traditionally, lignite/coal extraction often involves the removal of overburden – the topsoil and vegetation covering the sand deposits. Our sustainable approach focuses on utilizing this overburden material in sand processing, mitigating environmental impact and optimizing resource utilization

BEST PRICE BEST QUALITY

Our company is famous for providing silica sand and bed material of superior quality at very affordable rates

STATE OF THE ART MACHINERY

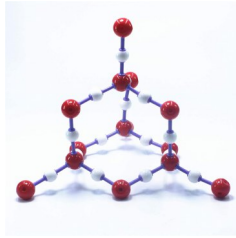
We boast of State-of-the-art machinery, proficient in-house laboratories and nurture alliances with the best packaging and transport companies for quality and timely delivery of your shipments.



SILICA SAND



Microscopy of Silica Sand



Crystal Structure of SiO₂



HIGH STRENGTH PURE SILICA SAND 100% SILICA SAND

Silica is the name given to a group of minerals composed of silicon and oxygen, It is composed of one atom of silicon and two atoms of oxygen resulting in the chemical formula SiO₂. Sand consists of small grains or particles of mineral and rock fragments. Although these grains may be of any mineral composition, the dominant component of sand is the mineral quartz, which is composed of silica (silicon dioxide).

REFERENCE STANDARD

IS 3018:1977, IS 1387:1967, IS 1987:2002

AREA OF APPLICATION

- ▶ Construction Material
- ▶ Paints & coatings
- ▶ Industrial abrasives
- ▶ Filtration media
- ▶ Glass making
- ▶ Ceramics
- ▶ Golf courses & sports fields
- ▶ Pigments
- ▶ Sandblasting and other abrasives
- ▶ Foundry sand Ceramics
- ▶ Production of silicon and silicon carbide
- ▶ Brick feeding material

BENEFITS

- ▶ Due to well sized material saving up to 23% of other material.
- ▶ Due to high bonding & non-reactiveness Cracks chances is negligible & Plaster remains long time and reduce corrosion effect.
- ▶ Due to perfect sizing plaster thickness is reduced and give more coverage.
- ▶ Surface Finishing of plaster much smoother compared to other ordinary sand.
- ▶ Due to heat resistance the wall & slab gets less heated and thus save energy.
- ▶ Wastage is nil due to sorted material.
- ▶ In laboratory all test parameter result shows minimum 30% higher strength

TECHNICAL INFORMATION

COMPRESSIVE STRENGTH	
Ordinary Sand	SAHAKAR® Silica (SiO ₂ 98%+)
39.9 N/mm ²	48.8 N/mm ²

Typical Chemical analysis Sahakar Silica (SiO ₂)										
	SiO ₂	Al ₂ O ₃	Fe ₂ O ₃	TiO ₃	CaO	MgO	Na ₂ O	K ₂ O	SO ₃	P ₂ O ₅
Silica Sand	97.66	1.27	0.18	0.20	0.11	Tr.	0.12	0.04	Tr.	Tr.

PARTICLE SIZE FOR DRY-MIX

APS Micron	600 Grade	1200 Grade
1700 to 600	10% to 15%	50% to 65%
425 to 150	80% to 90%	30% to 40%
106 to 75	0.1% to 1.0%	0.1% to 1.0%

PACKING SIZE

washing and grading standard packing of 40 kg bags / 1000 Kg Cargo Bags
Loose Cargo for bulk supply. (with Silica Royalty certificate)



READY MIX PLASTER

SMB



HIGH STRENGTH PURE SILICA SAND 100% SILICA SAND

Sahkar Industry-SMB is being a premixed ready to use Silica (SiO_2 98% +), Cement Base High Quality Adhesive Compound used for external as well as internal plastering by Manual or Machine base applications, which ensures quality consistency. Sahkar Industry-SMB is a single component water resistance monolithic plastering/rendering mixture with a ratio of Pure Silica, Cement and Adhesive Compound for applications in civil construction works.

REFERENCE STANDARD

IS 1661:1972, IS 2250:1965, IS 2402:1963

AREA OF APPLICATION

- Plaster should be capable enough to protect the wall from external UV rays, dampness, shocks, rain, humidity, Fire and sound. It also gives thermal insulation to the entire building. Good plastering material is the protective covering of entire building and provides long term durability to the building. It Can be applied on Brick, Concrete block, AAC Block, Fly ash block and Concrete surface.

SHELF LIFE

It has a shelf life of 12 months from the date of manufacture. Store at cool and dry place.

BENEFITS

- Improve durability and Structural integrity
- Resistant to weather, wear and corrosion
- It is much Purer and Premixed material makes Plastering easier and quicker.
- It gives ultimate strength and strong bonding with minimum cracks Better Coverage
- Well graded Silica sand ensures consistent quality and cost
- No Fly Ash

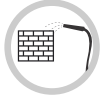
PACKING SIZE

40 Kg Bag Size / Cargo Bag 1000kg

DIRECTIONS FOR USE



The surface should be free from oil, grease, paint, loose plaster or dirt particles.



Dampen the wall before application of plaster



Water / Powder ratio : 17% to 19% Mixing for 3 minutes till it's free of lumps.



Leave the mix to react of 5-10 minutes before use.



The mixture should be thrown while the cement slurry is wet, ensure leveling with the help of tools.



After Final coat, ensure proper leveling with the help of appropriate tools.



Use between 5 C to 50 C.



Prevent direct contact with skin and eyes. In case of contact, wash with clean water immediately.

TECHNICAL INFORMATION

Bulk density	1300-1450 Kg/m ³
Water powder ratio	17-19% by weight
Fresh Wet Density	1700-1800 Kg/m ³
Pot life	1.5 Hr @ 30 C
Compressive strength @ 7 Days Coverage	8 - 9 MPa
Compressive strength @ 28 Days Coverage	11-12 MPa
Thickness of layer	8 mm to 12 mm Layer
Water curing	2-3 times/Day for 7 days
Wastage	Almost Nil
Final Finish	Smooth Finish
Initial Setting Time	1.5 to 2.0 Hr.
Final Setting Time	27 Days
Fly ash	Nil

COVERAGE TABLE FOR STANDARD SURFACE

Size of Bag	Thickness of Plaster	Area Coverage
40 kg	8 mm	30 to 32 Sq. Feet
40 kg	10 mm	20 to 21 Sq. Feet
40 kg	15mm	15 to 16 Sq. Feet
40 kg	18mm	12 to 13 Sq. Feet

LIMITATIONS

Do not apply this directly to gypsum plaster or boards, Fibre cement boards or other drywall partitions, plywood, chipboard, particleboard, decorative laminates or resilient Flooring, metal, plastic, deformable surfaces or subject to vibrations. Do not use for Fixing artificial/ Nano/ engineered stone/ composites/ metal tile.



BLOCK JOINT MORTAR

HVM



HIGH STRENGTH PURE SILICA SAND 100% SILICA SAND

Sahakar Industry-HVM is being a premixed ready to use Silica (SiO₂ 98% +), Cement Base High Quality Adhesive Compound Designed for use with water to produce high strength thixotropic mortar, for laying Aerated Light weight concrete, Fly ash bricks, cement hollow blocks, Cellular concrete blocks or smoothing over the block work surface in layers of up to 2mm to 8 mm thickness, that meet and exceed the requirements of National and International Standards. For Thin jointing with high adhesion to contribute to load bearing capacity of masonry.

REFERENCE STANDARD

IS 4031 Part 8 : 1988

AREA OF APPLICATION

- ▶ It Can be applied on Brick, Concrete block, AAC Block, Fly ash block and Concrete surface.
- ▶ For interior and exterior use for preparing thin bed adhesive for AAC, ALC and cellular concrete blocks.

SHELF LIFE

It has a shelf life of 12 months from the date of manufacture. Store at cool and dry place.

BENEFITS

- ▶ High compressive strength
- ▶ Ultimate Time saving product
- ▶ Premixed material makes easier and quicker
- ▶ No curing required after block work is done.
- ▶ Better Coverage
- ▶ No Fly Ash

PACKING SIZE

40 Kg Bag Size

DIRECTIONS FOR USE



The surface should be free from oil, grease, paint, loose plaster or dirt particles.



Water / Powder ratio: 20% to 22% Mixing for 3 minutes till it's free of lumps



Leave the mix to react of 5-10 minutes before use.



Use between 5 C to 50 C.



The mixture should be thrown while the cement slurry is wet, ensure leveling with the help of tools.



Tap the block gently using wooden or rubber mallet.



Wait for 24 hours for subsequent application



Prevent direct contact with skin and eyes. In case of contact, wash with clean water immediately

TECHNICAL INFORMATION

Bulk density	1300-1450 Kg/m ³
Water powder ratio	20% - 22% by weight
Fresh Wet Density	1700-1800 Kg/m ³
Pot life	1.5 Hr @ 30 C
Flexural Strength	>4.0 N/mm ² @ 28 days
Compressive strength	>11-12N/mm ² @ 28 days
Split Tensile Strength	>1.1N/mm ²
Thickness of layer	2 mm to 6 mm Layer
Water curing	Not Needed
Wastage	Almost Nil
Final Finish	Smooth Finish
Initial Setting Time	1.5 to 2.0 Hr.
Final Setting Time	27 Days

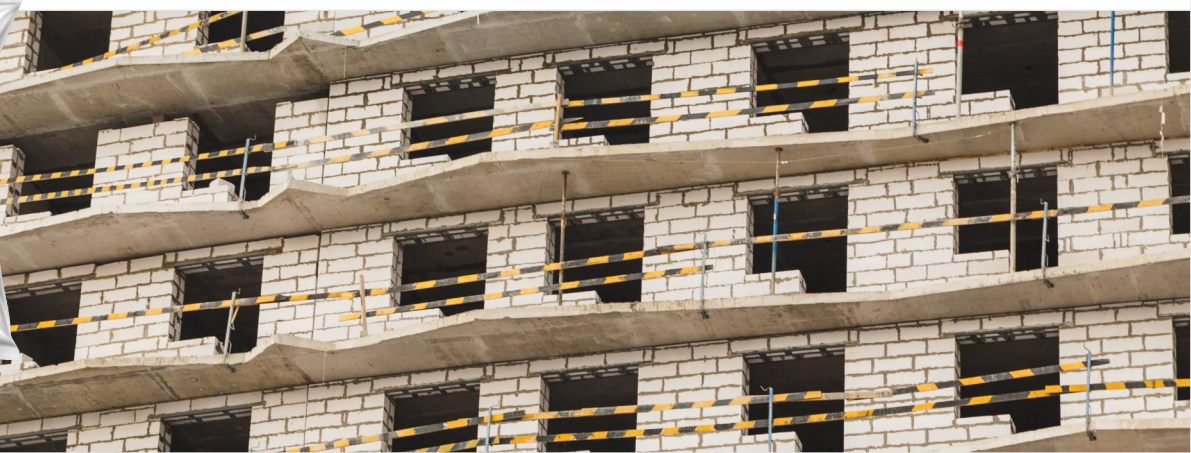
COVERAGE TABLE FOR STANDARD SURFACE

Size of Bag	Thickness of Plaster	Area Coverage
40 kg	2 mm	220 to 240 Sq. Feet
40 kg	3 mm	145 to 130 Sq. Feet
40 kg	4 mm	110 to 120 Sq. Feet
40 kg	6 mm	75 to 70 Sq. Feet

*blocks size in 600x200x100 STC

LIMITATIONS

Do not apply this directly to gypsum plaster or boards, Fibre cement boards or other drywall partitions, plywood, chipboard, particle board, decorative laminates or resilient Flooring, metal, plastic, deformable surfaces or subject to vibrations. Do not use for Fixing artificial/ Nano/ engineered stone/ composites/ metal tile.



FLOOR TILE ADHESIVE

NBK

NBK +



HIGH STRENGTH PURE SILICA SAND 100% SILICA SAND

Sahkar Industry-NBK is a premixed ready to use GREY Base Silica (SiO_2 98%+), Cement Base High Quality Adhesive Compound for all type of Tiles & Natural Stone Fixing applications for external as well as internal usage, which ensures consistent quality construction sites. Sahkar Industry is a single component water resistance bonding mixture with a ratio of Pure Fine Mess Silica, Cement and Adhesive Compound for applications in civil construction sites.

REFERENCE STANDARD

IS 15477, EN 1348

AREA OF APPLICATION

- ▶ This Fixture can be used for all types of ceramic tile, bricks, vitrified tiles, natural stones, Marble /Granite/ Terracotta, large format tile, Porcelain, as per IS 13712: 2006.
- ▶ Flooring and walls, for internal applications, for external area, dry & wet area, domestic applications, commercial applications.

SHELF LIFE

It has a shelf life of 12 months for sealed pack when stored under cover, out of direct sunlight, in damp-proof condition and protected from extremities of temperature.

BENEFITS

- ▶ High compressive strength
- ▶ Ultimate Time saving product
- ▶ Premixed material makes easier and quicker.
- ▶ Self compacting and Self Curing Properties
- ▶ Better Coverage
- ▶ No Fly Ash

PACKING SIZE

20 / 40 Kg Bag Size
If Req. 25 kg

DIRECTIONS FOR USE



Clean the surface to remove oil, bond inhibiting agents, dust



Water powder ratio : 20%-22% by weight of material.



Add Adhesive Bag in the water



Mix thoroughly using mechanical stirrer for 2-3 minutes



Leave the mix to react of 5 -10 minutes before use.



Apply adhesive on both surfaces using notch trowel.



Place the tiles on the surface then move it in perpendicular direction to notches.



Tap the tiles gently using wooden block or rubber mallet.



Wait for 24 hours for subsequent application.



Remove the excess adhesive using damp cloth /sponge.



Prevent direct contact with skin and eyes. In case of contact, wash with clean water immediately

TECHNICAL INFORMATION

Dry Bulk density	1300-1450 Kg/m ³
Water powder ratio	20% - 22% by weight
Fresh Wet Density	1700-1800 Kg/m ³
Open time (IS 15477:2019)	Approx. 20 minutes
Adjustability (IS 15477:2019)	Approx. 20 minutes
Compressive strength	≥ 12.1 to 14.5 Mpa NBK @ 7 days ≥ 23.8 to 28.0 Mpa NBK @ 28 days ≥ 34.1 to 36.9 Mpa NBK+ @ 28 days
Tensile adhesion strength as per (IS 15477:2019)	≥ 0.5 N/ mm ²
Pull Out adhesion strength as per (IS 15477:2019)	≥ 1.0 Mpa NBK @ 7 days ≥ 1.2 Mpa NBK+ @ 7 days ≥ 2.0 Mpa NBK @ 28 days ≥ 2.8 Mpa NBK+ @ 28 days
Application temperature (substrates & materials)	5°C to 35°C
Adhesive thickness of Layer	3 mm – 12 mm
Pot life	2.0 Hr @ 30 C
Settings/ trafficable time	24 hours

COVERAGE TABLE FOR STANDARD SURFACE

Size of Bag	Thickness of Plaster	Area Coverage
20 kg	3 mm	65 to 70 Sq. Feet
20 kg	5 mm	38 to 40 Sq. Feet
20 kg	6 mm	30 to 33 Sq. Feet
20 kg	8 mm	23 to 25 Sq. Feet

(using 6 mm x 6 mm notch)

LIMITATIONS

Do not apply this directly to gypsum plaster or boards, Fibre cement boards or other drywall partitions, plywood, chipboard, particle board, decorative laminates or resilient Flooring, metal, plastic, deformable surfaces or subject to vibrations. Do not use for Fixing artificial/ Nano/ engineered stone/ composites/ metal tile.



WALL TILE ADHESIVE

MKB

MKB+



HIGH STRENGTH PURE SILICA SAND 100% SILICA SAND

Sahkar Industry -MKB is a premixed ready to use GREY Base Silica (SiO_2 98% +), Cement Base High Quality Adhesive Compound for all type of Tiles & Natural Stone Fixing applications for external as well as internal usage, which ensures consistent quality. Sahkar Industry -MKB is a single component water resistance bonding mixture with a ratio of Pure Fine MessSilica, Cement and Adhesive Compound for applications in civil construction sites.

REFERENCE STANDARD

IS 15477, EN 1348

AREA OF APPLICATION

- ▶ This Fixture can be used for all types of ceramic tile, bricks, vitrified tiles, natural stones, Marble /Granite/Terra cotta, large format tile, Porcelain, as per IS 13712: 2006.
- ▶ Flooring and walls, for internal applications, for external area, dry & wet area, domestic applications, commercial applications.

SHELF LIFE

It has a shelf life of 12 months from the date of manufacture. Store at cool and dry place.

BENEFITS

- ▶ High compressive strength
- ▶ Ultimate Time saving product
- ▶ Premixed material makes easier and quicker.
- ▶ Self compacting and Self Curing Properties
- ▶ Better Coverage
- ▶ No Fly Ash

PACKING SIZE

20 / 40 Kg Bag Size
If Req. 25 kg

DIRECTIONS FOR USE



Clean the surface to remove oil, bond inhibiting agents, dust.



Water powder ratio : 20%-22% by weight of material.



Add Adhesive Bag in the water



Mix thoroughly using mechanical stirrer for 2-3 minutes



Leave the mix to react of 5 -10 minutes before use.



Apply adhesive on both surfaces using notch trowel.



Place the tiles on the surface then move it in perpendicular direction to notches.



Tap the tiles gently using wooden block or rubber mallet.



Prevent direct contact with skin and eyes. In case of contact, wash with clean water immediately.



Remove the excess adhesive using damp cloth / sponge.



Wait for 24 hours for subsequent application.

TECHNICAL INFORMATION

Dry Bulk density	1300-1450 Kg/m ³ 20% - 22% by weight
	1700-1800 Kg/m ³
Open time (IS 15477:2019)	Approx. 20 minutes
Adjustability (IS 15477:2019)	Approx. 20 minutes
Compressive strength	≥ 12.1 to 14.5 Mpa MBK @ 7 days ≥ 23.8 to 28.0 Mpa MBK @ 28 days ≥ 34.1 to 36.9 Mpa MBK+ @ 28 days
Tensile adhesion strength as per (IS 15477:2019)	≥ 0.5 N/ mm ²
Pull Out adhesion strength as per (IS 15477:2019)	≥ 1.2 Mpa MBK @ 7 days ≥ 1.6 Mpa MBK+ @ 7 days ≥ 3.2 Mpa MBK @ 28 days ≥ 3.6 Mpa MBK+ @ 28 days
Application temperature (substrates & materials)	5°C to 35°C
Adhesive thickness of Layer	3 mm – 12 mm
Pot life	2.0 Hr @ 30 C
Settings/ trafficable time	24 hours

COVERAGE TABLE FOR STANDARD SURFACE

Size of Bag	Thickness of Plaster	Area Coverage
20 kg	3 mm	65 to 70 Sq. Feet
20 kg	5 mm	38 to 40 Sq. Feet
20 kg	6 mm	30 to 33 Sq. Feet
20 kg	8 mm	23 to 25 Sq. Feet

(using 6 mm x 6 mm notch)

LIMITATIONS

Do not apply this directly to gypsum plaster or boards, Fibre cement boards or other drywall partitions, plywood, chipboard, particle board, decorative laminates or resilient Flooring, metal, plastic, deformable surfaces or subject to vibrations. Do not use for Fixing artificial/ Nano/ engineered stone/ composites/ metal tile.



STONE ADHESIVE

DSM



HIGH STRENGTH PURE SILICA SAND 100% SILICA SAND



Sahkar Industry DSM Stone Adhesive is a premixed ready to use GREY Base Silica (SiO_2 98% +), Cement Base High Quality Adhesive Compound for all type of Tiles & Natural Stone Fixing applications for external as well as internal usage, which ensures consistent quality. Sahkar Industry DSM is a single component water resistance bonding mixture with a ratio of Pure Fine MessSilica, Cement and Adhesive Compound for applications in civil construction sites.

REFERENCE STANDARD

IS 15477, EN 1348

AREA OF APPLICATION

- ▶ This Fixture can be used for all types of ceramic tile, bricks, vitrified tiles, natural stones, Marble /Granite/ Terracotta, large format tile, Porcelain, as per IS 13712: 2006.
- ▶ Flooring and walls, for internal applications, for external area, dry & wet area, domestic applications, commercial applications.

SHELF LIFE

It has a shelf life of 12 months from the date of manufacture. Store at cool and dry place.

BENEFITS

- ▶ High compressive strength
- ▶ Ultimate Time saving product
- ▶ Premixed grey base material makes Fixing easier and quicker
- ▶ Self-curing properties, due to Silica Base compound the temperature of bonding agent is low & gives fast curing, which allows hassle-free application with minimum labor.
- ▶ Better Coverage - 35 sq.ft. with a thickness fo 6mm per 40kg Premix Bag
- ▶ No Fly Ash

PACKING SIZE

20 / 40 Kg Bag Size
If Req. 25 kg

DIRECTIONS FOR USE



Clean the surface to remove oil, bond inhibiting agents, dust.



Water powder ratio : 20%-22% by weight of material.



Add Adhesive Bag in the water



Mix thoroughly using mechanical stirrer for 2-3 minutes



Leave the mix to react of 5-10 minutes before use.



Apply adhesive on both surfaces using notch trowel.



Place the tiles on the surface then move it in perpendicular direction to notches.



Tap the gently using wooden block or rubber mallet



Remove the excess adhesive using damp cloth / sponge.



Wait for 24 hours for subsequent application.



Prevent direct contact with skin and eyes. In case of contact, wash with clean water immediately

TECHNICAL INFORMATION

Dry Bulk density	1300-1450 Kg/m ³
Water powder ratio	20% - 22% by weight
Fresh Wet Density	1700-1800 Kg/m ³
Open time (IS 15477:2019)	Approx. 20 minutes
Adjustability (IS 15477:2019)	Approx. 20 minutes
Compressive strength	≥ 12.1 to 14.5 Mpa DSM @ 7 days ≥ 34.1 to 36.9 Mpa DSM @ 28 days
Tensile adhesion strength as per (IS 15477:2019)	≥ 0.5 N/ mm ²
Pull Out adhesion strength as per (IS 15477:2019)	≥ 1.5 Mpa DSM @ 7 days ≥ 3.5 Mpa DSM @ 28 days
Application temperature (substrates & materials)	5°C to 35°C
Adhesive thickness of Layer	3 mm – 12 mm
Pot life	2.0 Hr @ 30 C
Settings/ trafficable time	24 hours

COVERAGE TABLE FOR STANDARD SURFACE

Size of Bag	Thickness of Plaster	Area Coverage
20 kg	3 mm	65 to 70 Sq. Feet
20 kg	5 mm	38 to 40 Sq. Feet
20 kg	6 mm	30 to 33 Sq. Feet
20 kg	8 mm	23 to 25 Sq. Feet

(using 6 mm x 6 mm notch)

LIMITATIONS

Do not apply this directly to gypsum plaster or boards, Fibre cement boards or other drywall partitions, plywood, chipboard, particle board, decorative laminates or resilient Flooring, metal, plastic, deformable surfaces or subject to vibrations. Do not use for Fixing artificial/ Nano/ engineered stone/ composites/ metal tile.



WATER PROOFING



HIGH STRENGTH PURE SILICA SAND 100% SILICA SAND



Sahkar Industry MVM Concrete Booster is being mineral base Silica (SiO_2 98% +) powder that enhance the concrete strength with multilevel properties Like Self compacting, Strength Gainer, Heat Dissipation due to Silica, Smooth Surface Finish for National and International Standards of concreting works and Ready Mix Concretes work.

REFERENCE STANDARD

IS 516:2018 (Part2/Sec1), IS 4031:1988 Part 8,
IS 4926:2003

AREA OF APPLICATION

- ▶ High grade concretes
- ▶ RMC plant
- ▶ Precast work
- ▶ All type concrete work.

SHELF LIFE

It has a shelf life of 12 months from the date of manufacture.
Store at cool and dry place.

BENEFITS

- ▶ Reduces cracks and improving cohesionan
- ▶ Reducing maintenance costs
- ▶ High compressive strength
- ▶ Ultimate Time saving product
- ▶ Silica sand is purity and durability
- ▶ Reduce water leakage
- ▶ Reduce Temperature - by carbon at temperatures $1,600^{\circ}\text{C}$ – $2,000^{\circ}\text{C}$, to yield the volatile silicon monoxide.
- ▶ Easy to mix application

PACKING SIZE

40 Kg Bag Size

DIRECTIONS FOR USE



The surface should be free from oil, grease, paint, loose plaster or dirt particles.



Water / Powder ratio :16% to 18%
Mixing for 3 minutes till it's free of lumps.



Leave the mix to react of 5 -10 minutes before use.



The mixture should be thrown while the cement slurry is wet, ensure leveling with the help of tools.



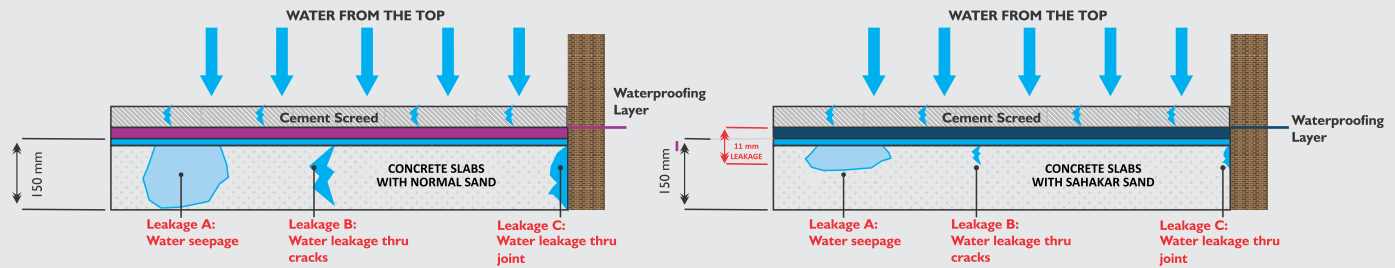
Use between 5 C to 50 C.



Water curing for 7 days



Prevent direct contact with skin and eyes. In case of contact, wash with clean water immediately



OTHER WATER PROOFING

MVM WATER PROOFING

TECHNICAL INFORMATION

TEST RESULT REGULAR CONCRETE (BEFORE)

TEST RESULT SAHKAR - MVM (SiO₂ 98%) ADD 20% IN CONCRETE (AFTER)

Compressive Strength	Full Strength in 28 days	Full Strength in 7 days
Flexural Strength	4.40 Mpa	6.60 Mpa
Split Tensile Strength	2.21 Mpa	4.70 Mpa
Abrasion Resistance	33000 Cu mm	23993 Cu mm
Rapid Chloride Test (RCPT)-ASTM	Between 1000 & 2000 coulombs (Moderate)	Below 600 coulombs (Very Low)
Water Permeability - DIN 1048	35 mm	10 mm
dynamic modulus of elasticity (Ed) in Gpa	26.00 Gpa	34.00 Gpa
Shrinkage Cracks	High	Very Low
Workability	Normal	Free Flow
Porosity	High	Minimum
Surface Finish	Rough	Smooth

COVERAGE TABLE FOR STANDARD SURFACE

Size of Bag	Thickness of Plaster	Area Coverage
40 kg	4 mm	110 to 120 Sq. Feet
40 kg	6 mm	75 to 70 Sq. Feet
40 kg	10 mm	44 to 48 Sq. Feet
40 kg	15 mm	30 to 32 Sq. Feet

(using 6 mm x 6 mm notch)

LIMITATIONS

Do not apply this directly to gypsum plaster or boards, Fibre cement boards or other drywall partitions, plywood, chipboard, particle board, decorative laminates or resilient Flooring, metal, plastic, deformable surfaces or subject to vibrations. Do not use for Fixing artificial/ Nano/ engineered stone/ composites/ metal tile.



A BENCHMARK FOR QUALITY SOLUTIONS

SAHKAR INDUSTRY

📍 Head Office:

Shop No. 17, 1st Floor, Balaji Complex, B/H. Vishal Furniture, 8-A N.H., Morbi - 363 642 (Gujarat) INDIA.

📍 Corporate Address:

U1, JD Complex, AAT Road, ERU, Navsari - 396 445, Gujarat, India.

☎ +91 77790 55555 | 99094 99199

✉ info@sahkarindustry.com

🌐 www.sahkarindustry.com